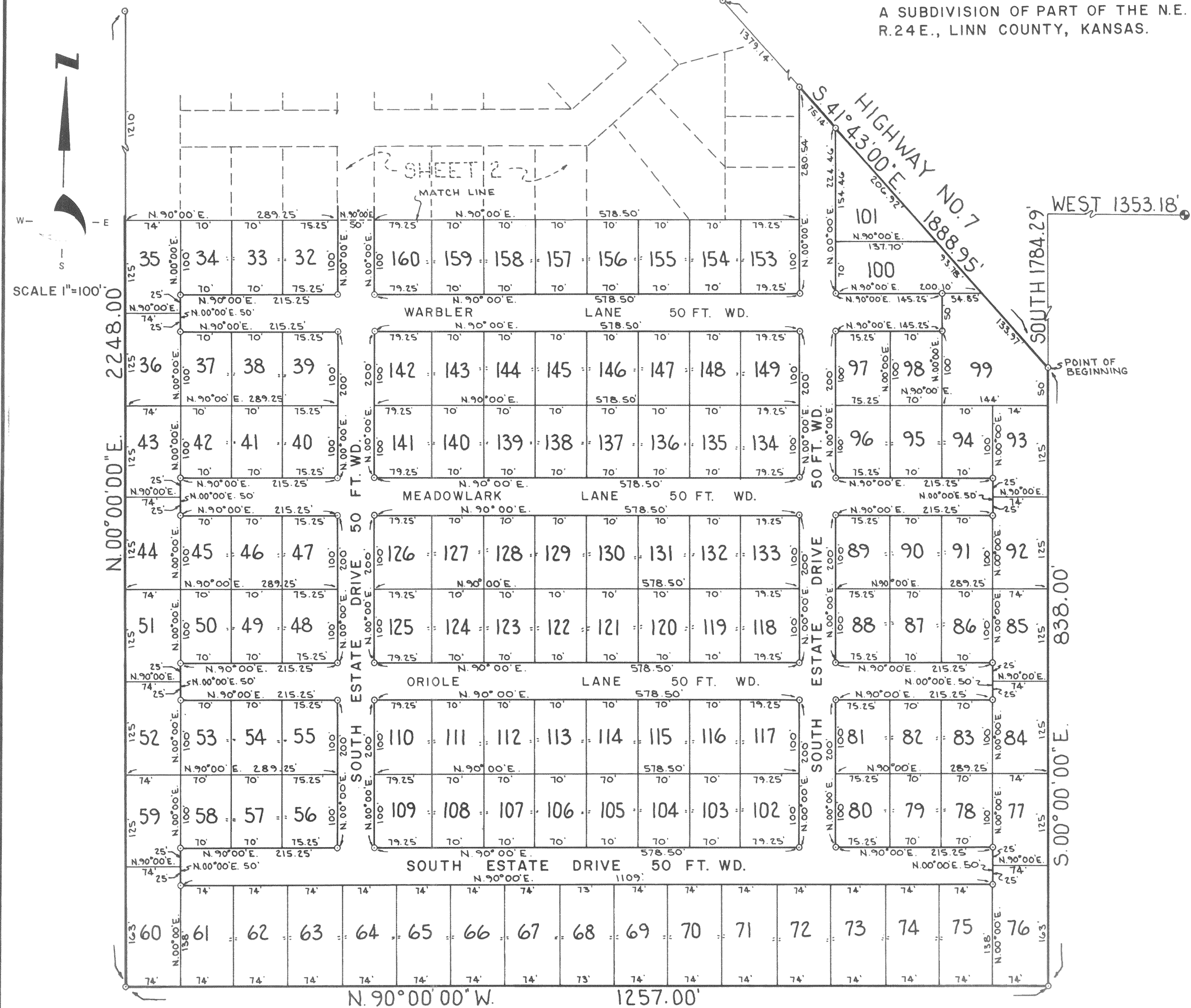
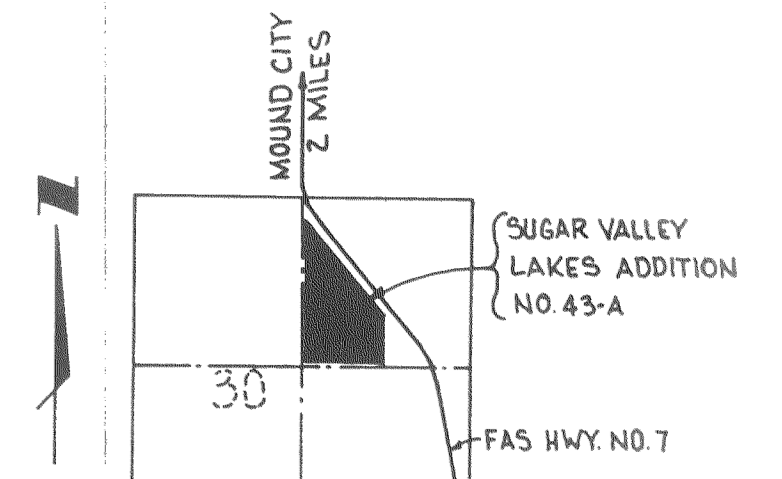


# SUGAR VALLEY LAKES addition no. 43-A

A RE-PLAT OF PART OF "SUGAR VALLEY LAKES ADDITION NO. 43"  
A SUBDIVISION OF PART OF THE N.E. 1/4 OF SECTION 30, T. 22 S.  
R. 24 E., LINN COUNTY, KANSAS.



N.E. CORNER OF SECTION 30, T. 22 S., R. 24 E.



SECTION 30, T. 22 S., R. 24 E.

NOTE: PRIVATE EASEMENTS FOR PUBLIC UTILITIES EXIST WITHIN 10 FEET OF ALL LOT LINES.